

Safer Cheshire East Partnership Plan

2010-11

Introduction

1.1 Background

The Safer Cheshire East Partnership (SCEP) was formed in April 2009 as a result of the Local Government Review in Cheshire. Previous to this date, the area of Cheshire East had 3 safer partnerships called Crime and Disorder Reduction Partnerships (CDRPs) and these were geographically based around the old borough boundaries of Macclesfield, Congleton and Crewe & Nantwich. The organisations with named responsibility to work in partnership to tackle crime and disorder in the area of Cheshire East are Cheshire East Council, Cheshire Constabulary, Cheshire Fire and Rescue Service, Central and Eastern Primary Care Trust, Cheshire Police Authority and Cheshire Probation Service. In addition, key agencies within the partnership are Cheshire Drug and Alcohol Team, Cheshire East Domestic Abuse Partnership, Youth Offending Team and members from the voluntary sector.

A requirement of the Safer Cheshire East Partnership is to conduct an annual strategic assessment. This document provides intelligence and data from partner agencies to help monitor performance, identify emerging problems and to effectively plan for the future.

1.2 Purpose of the plan

The purpose of the partnership plan is to indicate what are the Safer Cheshire East Partnership priorities (identified from the strategic assessment) for 2010-11 and to set out a strategy detailing how these issues should be tackled and by who. Where appropriate, links are shown to the National Indicators which form part of the Local Area Agreement.

The Current picture

Cheshire East has a population of 360,000 and is 116,638 hectares in size. The age structure of the Cheshire East is slightly older than that of England & Wales. 5% of Cheshire East's population is aged under 5 and 12% are aged 5 to 14 and 18% are aged 65 or more. There will be around 5% fewer children living in Cheshire East by 2026 than there were in 2006 and the number of people aged 85+ will double between 2006 and 2026.

2.1 What you have said

The residents perceive Cheshire East as a safe place to live. 92% of residents feel safe when outside in their local area during the day, after dark that reduces to 54% compared with North West England of 87% and 47% respectively. 64% of residents (which was the top priority) said that levels of crime are the most important factor in making somewhere a good place to live. Only 25% of residents feel that police and public services are successfully dealing with anti-social behaviour and crime in their area. (*source: Cheshire East website*)

2.2 Current Performance

The table overleaf shows the outturn performance details for the Safer Cheshire East Partnership 2009 – 2010.

Indicator	Title	Baseline (2008/09 outturn unless stated)	2009/10 Target	Mid Year Actual	Third Quarter Actual	Fourth Quarter Actual	Performance Assessment	Comments
NI 018	Adult re-offending rates for those under probation supervision	8.31%	8.20% (275)	8.31% (-5.85%)	8.83% (-0.62%)	8.97% (+1.12%)	Amber	Rate of adult re-offending continues to remain below predicted rate.
NI 020	Assault with injury crime rate	5.2 (1868)	5 (1819)	3.22 (1007)	4.42 (1442)	5.08 (1833)	Amber	Outturn within tolerances of target. Projects planned for 10/11 to reduce crime rate by April 2011.
NI 021	Dealing with local concerns about anti-social behaviour and crime by the local council and police	25.4%	27.3%	Place survey	Place survey	Place survey	Place Survey	Place Survey completed biannually. Next survey due 10/11. No target set for 09/10.

NI 030	Re-offending rate of prolific and priority offenders	210 offences (Oct 07 – Sept 08)	15% reduction (e.g. > 178 offences to be committed)	72 offences	Awaiting data from GONW	Data not expected from GONW until August 2010	Green	Data from GONW has a minimum 3 month lag time to allow for offenders to attend court and be convicted
	PPO - Local Indicator	Varies – 12 months before they became PPOs Total 506 offences	40% reduction in offending	64% Reduction	74% Reduction	69% Reduction		Total year end Local Indicator reduction rate 70%

NI 032	Repeat incidents of domestic violence	31%	26%	29%	27%	26%	Green	Whole partnership approach, of which Multi-Agency Risk Assessment Conferencing (MARAC) is central, has been shortlisted for IdeA Innovations Award. Revision of target for 10/11 being discussed with GONW.
NI 033a	Deliberate primary fires	325 (2007/08)	214	81	117	168	Green	Target exceeded
NI 033b	Deliberate secondary fires	669 (2007/08)	408	213	291	361	Green	Target exceeded
NI 47	People killed or seriously injured in road traffic accidents	2008 = 311 3 Yr/Av = 277 1.1% reduction	233	134	264	262 (Actual)	Red	LSP / LAA Delivery Plan under authority of Cheshire Fire Service / Cheshire Safer Roads Partnership. 10/11 intelligence based Action Plan to be produced for focussed work as part of LTP 3 process. Overall performance trajectory is positive but targets overall not met.

LAA 036	Reported incidents of Anti Social Behaviour	19,292 (11,657 BG6)	18,327 (11,074 BG6)	10,803	14,582	17,905	Green	Seasonal variation following Christmas period has seen reduction in reported incidents of anti-social behaviour.
LAA 037	Increase in proportion of non-Police referrals to the Cheshire DAFSUs and MARACs	15%	35%	32%	38%	39%)	Green	Non-police referrals to MARAC are important because at least half of all serious incidents are not reported to police. The target has been significantly exceeded showing excellent partnership investment in MARAC.
LAA 038	Alcohol arrest referrals	120 brief interventions per quarter	200 brief interventions per quarter	75 brief interventions	165 brief interventions	263 brief interventions	Amber	Funding approved in Third Qtr 09/10 and service improved. On course to achieve/ exceed future targets based on current resources.
LAA 039	Anti social behaviour - criminal damage	4944	4697 (5% decrease)	1045	No Q3 reporting	4216 (11.69)	Green	Target exceeded. Major multi-agency focus in 2009/10 on ASB at key times (e.g. Halloween, Bonfire Night)

Development of Plan

3.1 Vision of Safer Cheshire East Partnership

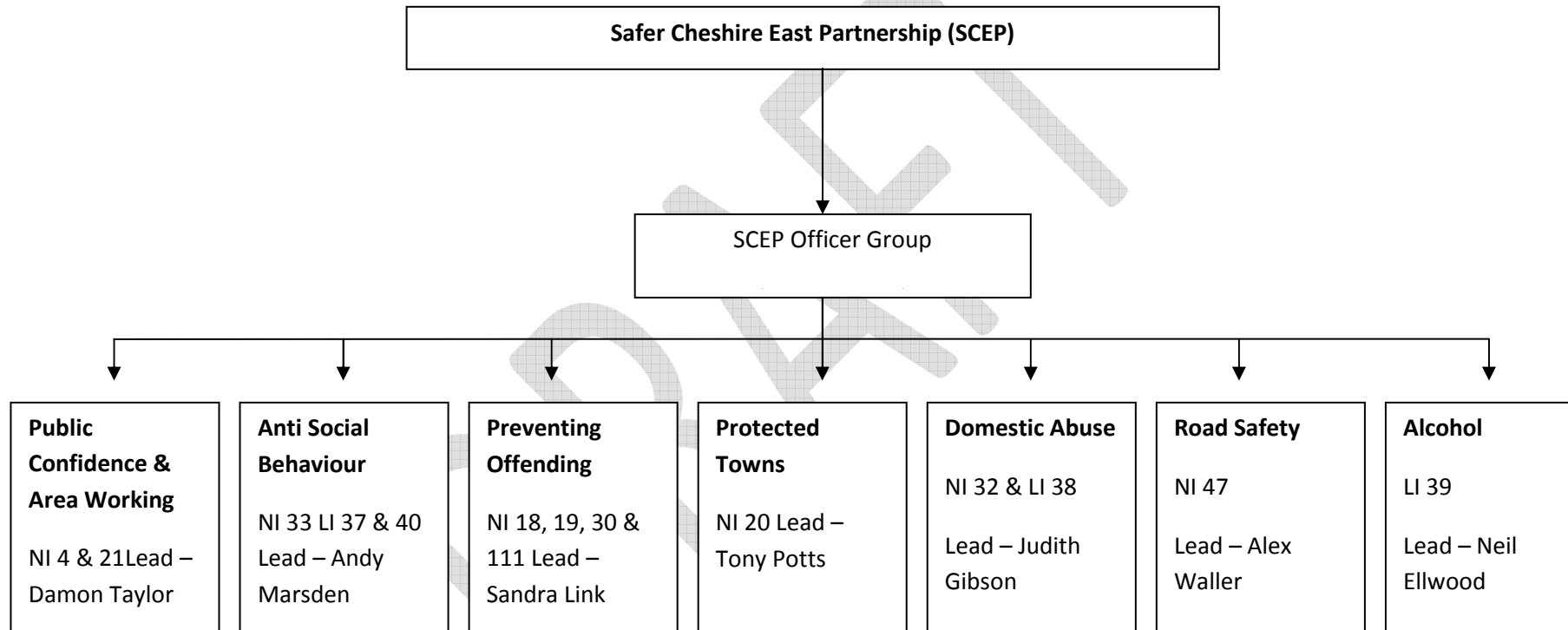
'A Safer and Stronger Community for All'

3.2 Pledge

The Partnership's Pledge is to

- Reduce anti social behaviour and crime and disorder across Cheshire East
- Reduce the fear of crime and engage with our communities
- Reduce the number of offenders committing more crime
- Keep our roads safe
- Reduce domestic violence and other violence offences happening within our homes, within our neighbourhoods and within our towns
- Reduce the number of crime being committed by people under the influence of alcohol and drugs

3.3 Safer Cheshire East Partnership Structure



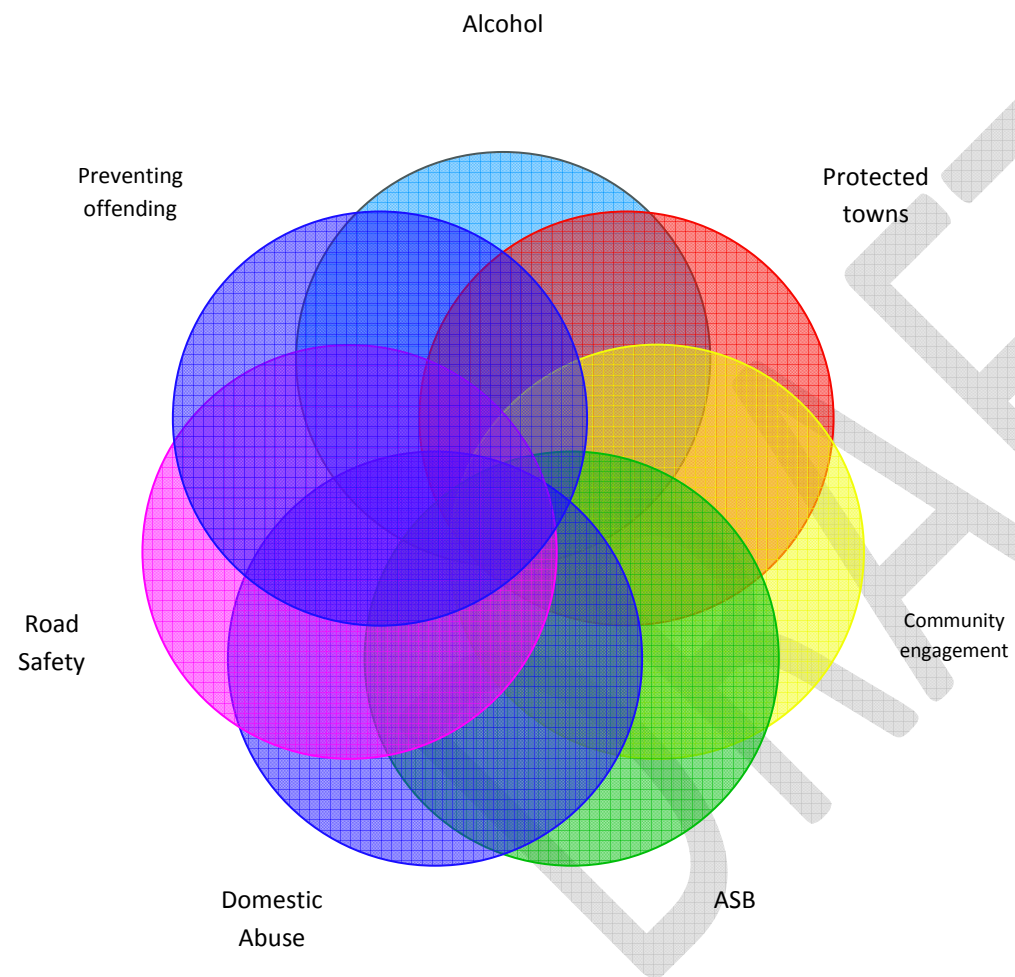
3.4 Cross Connectivity & Partnership working

All of the 7 priorities areas for the Safer Cheshire Partnership have cross connectivity. One of the main contributing factors is the use of alcohol. The Local Strategic Partnership is currently pulling together a project group across the five thematic work stream (Safer Cheshire East Partnership being one of them) to look at how different agencies can work together to reduce alcohol related harm.

Over the last 12 – 18 months, there has been significant development in relation to partnership working such as co-location of multi agency teams. There is a multi-agency Prolific and Priority Offending team consisting of Police and Probation staff working together within the same location, sharing some resources and funding to support the work of project. More recently, the Cheshire East Community Safety Team and the Anti Social Behaviour Team have re-located to the Cheshire Police Partnership Unit. This has allowed for closer working in relation to sharing information, resources and deployment to staff.

In May 2010, the Community Safety and Justice Commission was formed (which is chaired by the Chief Constable of Cheshire) and one of the aims of this group is to look at how partnerships can be more effective. A piece of work currently being undertaken at the moment is looking at pooling various funding streams together. By doing this will hopefully reduce duplication of work and/or financial implications.

The simple structure demonstrates how each subgroup within the Safer Cheshire East Partnership overlaps the work of other areas within the partnership.



Priority Areas of the Safer Cheshire East Partnership

3.5 Links to other plans

The Safer Cheshire East Partnership sits within the structure of the Cheshire East local Strategic partnership and is one of the five thematic partnerships. This partnership plan has been developed and aligned with a number of key strategies including

- Cheshire East Sustainable Community Strategy
- Local Area Agreement
- Cheshire Police Authority Policing Plan
- Cheshire Fire & Rescue Locality Action Plan

Safer Cheshire East Partnership Priorities

4.1 Community Engagement and Area Working

WHAT'S THE ISSUE?

Many agencies are working across Cheshire East to make the borough safe and feel safe. We understand the need to secure greater efficiencies from the way we spend the public's money, and we are therefore seeking ways in which the effort that we are all undertaking can be drawn together to avoid unnecessary duplication. We recognise that if we pool our resources and effort together we can deliver a better service to the public at less cost.

We also recognise how important it is to involve the public of Cheshire East in how the Partnership delivers its community safety service, and wish to build on the development of the Local Area Partnerships, of which there are seven in the area, to ensure that delivery at the local level is very much focused on an accurate analysis of local need and demand. It is clear that a current issue of concern for many people relates to anti-social behaviour, and we recognise the negative impact it can have on people's enjoyment of their local environment if the issue is not tackled effectively early on by all agencies concerned.

WHERE ARE WE NOW?

Currently, there are lots of mechanisms which are employed throughout the area to seek the views of the public on the services we provide to them, and how this may be further improved. The Partnership is measured against a suite of national performance indicators and two in particular, around the percentage of people who feel they can influence decisions in their locality & how the police and council deal with local concerns about Anti-Social Behaviour and crime, are a particular focus of this Group.

The Partnership is going through a process to map all the engagement activity we currently undertake with a view to streamlining it. In the first instance this will be undertaken in a pilot area, based around one of the Local Area Partnerships, but if successful it will be rolled out across the Borough. We will work closely with local people through the Local Area Partnerships to ensure your views about local delivery are listened to and will look to explore in more detail some of your concerns around anti-social behaviour in your local area. Utilising survey data which is already readily available, we want to identify those areas in the borough which perhaps do not enjoy such high levels of confidence in the police and local council, and where residents feel that their voice is not adequately heard, and work with them to improve their confidence in local agencies and increase their feelings of wellbeing in their own environment.

WHERE DO WE WANT TO BE?

We want people to feel more involved in the work of their local partnership and have a greater understanding of the work we are doing across the partnership to deliver a safer Cheshire East. In return, we hope to be able to develop a better picture of local concerns and demand to ensure that future service delivery can more accurately reflect those issues. This is not purely about satisfying performance in terms of national indicators, but the primary focus will be to ensure that local people can and do feel more involved in the work of the wider partnership.

4.2 Anti Social Behaviour

WHERE ARE WE NOW

Over the last 12 months, there has been a significant reduction in the number of anti social behaviour being reported (1,387 fewer incidents in 2009/10 compared with 2008/09). However across Cheshire East, there are areas where anti social behaviour is a problem. There are also specific times of the year, when incidents of anti social behaviour increase such as school holidays and Halloween. Cheshire police and Cheshire East Council Anti Social Behaviour team are continuing to work closely together with other key agencies to reduce anti social behaviour by a further 5% for 2010/11.

WHAT HAVE WE ACHIEVED

- Achieved our 5% reduction target for 2009/10
- Established an anti social behaviour working group which meets monthly to discuss current issues relating to Cheshire East
- Working with other Anti Social behaviour co-ordinators across Cheshire to ensure best practice is achieved
- Held several successful campaigns across Cheshire East at key times within the year to engage with local communities
- Secured funding from the Safer Cheshire East Partnership to deliver key activities across the year

WHERE DO WE WANT TO BE

- Full staffing levels within Anti Social Behaviour team
- Develop an anti social behaviour database whereby all incidents are reported and monitored
- Develop an anti social behaviour hotline number for residents to call if they are experiencing anti social behaviour
- social marketing campaigns for parents and carers to challenge youth behaviour and promote “You said we did” publicity
- Utilisation of the Town centre CCTV systems, including mobile units to proactively monitor and provide intelligence, to enable a more structured response to issues to hot spots.

4.3 Preventing Offending

Cheshire Probation supervises Offenders In Cheshire East To:-

- Reduce Re-Offending
- Protect The Public
- Reduce The Number Of Future Victims
- Rehabilitate Offenders
- Enable Offenders To Repay Their Debt To The Local Community By Undertaking Community Payback

Probation Staff in Cheshire East will work with partners to reduce re-offending and improve community safety. Specifically:-

- We will target prolific and priority offenders.
- We will provide a range of sentences to the local courts to reduce alcohol related crime and drug related crime.

The Eastern Priority Prolific Offender (PPO) Unit was set up as a partnership approach to tackle offending behaviour of prolific offenders, who cause the greatest harm to the community.

It was recognised that reducing their offending could not be done by any one agency in isolation, hence the coming together of Police, Probation, Nacro and DIP in partnership. Working together, alongside other organisations such as Cheshire East Strategic Housing and Registered Social Landlords, they address the core issues that contribute to offenders continuing their destructive lifestyles.

Nominations for PPO status can come from several sources, but most often via the police or probation, where an offender is considered a particularly high risk to community safety/fear.

Those successful nominations are separated into two strands, either re-settle and rehabilitate for those who are willing to engage with the unit, or catch and convict for those who fail to engage

Those who engage with the unit are offered assistance with finding accommodation, re-training, jobs, lifestyle skills and drug rehabilitation, effectively supporting their resettlement and rehabilitation into the community. Those offenders who fail to engage are still encouraged to do so, the various services always being open to them should they chose to engage.

Success is measured mainly by reduction in offending by the PPO's. A baseline 'score' of convictions and offences is taken before acceptance onto the scheme. Their offending behaviour is subsequently monitored following acceptance. Last year saw a reduction in offences committed by 70%, when set against a Local Indicator measure.

WHAT DO WE WANT TO ACHIEVE

The Unit has proven success in reducing re-offending of the most prolific offenders who live in Cheshire East. This equates to hundreds of fewer victims of crime.

The target set under NI 30 for 2010-2011 is a 15% reduction against that indicators baseline. The target has yet to be set against the Local Indicator for this year (last years target was 40% reduction).

4.4 Protected Towns

WHAT ARE THE CHALLENGES

Although Violent Crime has fallen, surveys show that a quarter of the public perceive that Crime and Disorder has increased. In 2005/6 17% of all violent incidents were committed in or around pubs or clubs. The partnership wishes to create a safe night time economy that encourages visitors to come to our town centres, and be able to enjoy their night out without becoming a victim of crime.

WHERE ARE WE NOW?

Through the Safer Cheshire East Partnership agencies work together to make our towns a safer place to visit and enjoy. This includes:

- A proactive and positive approach to dealing with offenders
- Introduced “Arc Angel” protected towns scheme in Congleton
- Established “PubWatch” schemes in all our Towns
- Have a comprehensive CCTV network in place
- Engage with Licensees in the promotion of responsible drinking

WHAT HAVE WE ACHIEVED?

- A reduction in alcohol related offences in our town centres
- Created a safer night time economy
- Increased membership of “Pubwatch” and “Business Watch” schemes

WHERE DO WE WANT TO BE?

- Consolidate and integrate our existing 3 CCTV control rooms
- Continue to effectively deploy our community wardens in key areas of concern to promote public reassurance
- Work closer with other agencies, in a more “Joined” up way to carry out positive enforcement, and ensure problematic premises are dealt with effectively.

4.5 Domestic Abuse

WHAT IS THE PROBLEM?

Domestic abuse harms thousands of people in Cheshire East each year. It is a crime and a serious safeguarding issue for children and young people and is unacceptable in all its forms. In 2009/10 police attended 5326 domestic incidents and we know that less than half of all incidents are reported.

WHERE ARE WE NOW?

Through Cheshire East Domestic Abuse Partnership agencies work together to help people be safe and to recover. This includes:

- Multi-Agency Risk Assessment Conferencing (MARAC) for those at highest risk, supported by the Family Safety Unit
- two refuges providing housing and community support
- a range of children's interventions
- a specialist court in Crewe
- police, court and probation responses dealing with offenders
- a voluntary perpetrator programme

WHAT HAVE WE ACHIEVED?

- 342 adults with 463 children were safeguarded through MARAC
- $\frac{3}{4}$ of these high risk victims did not report a further offence

WHERE DO WE WANT TO BE?

- make sure everyone who needs services can access them regardless of gender, age, ethnicity, sexual orientation
- continue to reduce the number of repeats
- make sure services are delivered locally when people need them

Quotes from survivors of domestic abuse

For the first time in 6 years I actually feel much safer and that procedures have been put in place that would benefit my children and myself if we were in danger again

I have learnt how to look for early signs of abuse in a new relationship and how to be a stronger person

You helped me gain confidence in my own ability to do things. Face fears. become resilient, make decisions

4.6 Road Safety

WHAT's THE PROBLEM?

During 2009 a total of 266 people were killed or seriously injured on roads within Cheshire East. 28 of these were children.

WHERE ARE WE NOW?

We have established multi-agency delivery groups focusing on Education, Enforcement and Road Safety Engineering.

WHAT HAVE WE ACHIEVED?

- Delivered a wide range of educational and awareness programs including Driver Engagement Days, Motorcycle Rider Engagement Days, Drive Survive Courses, Cheers BAR, Occupational Road User events, School/College events and activities etc
- Provided heavily subsidized training courses to drivers and motorcyclists. (Pass+ and Life Advanced Motorcycle Courses)
- Delivered numerous high profile campaigns such as Christmas drink/drug drive, Winter Driving, Child Restraint Systems, Road Safety Week etc
- Supported delivery of free cycle training to year 6 pupils and also issued free bike lights to young cyclists.
- Implemented road safety engineering activities to reduce the risk in identified accident hotspot areas.
- Carried out enforcement activities including targeted police patrols, community speed watch and deployment of high profile speed indication devices.

WHERE DO WE WANT TO BE?

We will continue to work together to ensure that no more than 235 are killed or seriously injured on our roads this year.

4.7 Alcohol Abuse

The connectivity between offending, violence, anti-social behaviour/disorder and alcohol is hugely significant. Nationally, it is estimated that crime and antisocial behaviour, associated with alcohol, costs in the region of £7.3 billion per year. This figure includes the major costs to the emergency services and the criminal justice system as well as the costs incurred by the victims.

The British Crime Survey 2007/08 identified that in 45% of all violent incidents, victims believed offenders to be under the influence of alcohol.

WHERE ARE WE NOW:

The Alcohol Arrest Referral Scheme in Cheshire East targets adults arrested for alcohol-related offences to given an intervention whilst in custody by a trained worker.

Such sessions are structured to inform arrestees about safe drinking levels and the links between unsafe drinking and offending using NHS recommended auditing tools.

An individual can then attend a second more detailed intervention; should a more serious issue be identified then a referral is made to the clients General Practitioner or specialist services.

Brief interventions of various forms and delivered in a variety of settings are effective in reducing alcohol consumption among increasing risk and high risk drinkers to low risk levels.

(Review of the Effectiveness of Treatment for Alcohol Problems 2006, Raistrick D, et al)

WHAT HAVE WE ACHIEVED:

The scheme aims to reduce re-offending rates among drinkers who enter the custody suite and in particular to refer dependent drinkers into more intensive levels of treatment.

Between September 2009 and March 2010 over two hundred and sixty interventions have been completed, re-offending rates for those individuals is low.

WHERE DO WE WANT TO BE

To continue to increase the number of referrals

To work in partnership with other agencies to prevent alcohol related re-offending

To ensure that those dependent drinkers who are more likely to re-offend are intensively case managed.

APPENDIX 1: List of Partners

Cheshire East Council

Cheshire Constabulary

Cheshire Police Authority

Cheshire Fire & Rescue Service

Central & Eastern Cheshire Primary Care Trust

National Probation Service – Cheshire

Cheshire East Domestic Abuse Partnership

Cheshire Drug and Alcohol Team

Connexions

Cheshire Youth Offending Team

Cheshire East Strategic Housing

Registered Social Housing – including Wulvern Housing, Dane Housing & Cheshire Peaks and Plains

Cheshire East Congress – Voluntary Service

UK Border Control

Job Centre Plus

Cheshire East Town and Parish Council Association

APPENDIX 2: Abbreviations

ASB	Anti-Social Behaviour
BCS	British Crime Survey
CAM	Community Action Meeting
CEC	Cheshire East Council
CCTV	Closed Circuit Television
CEDAP	Cheshire East Domestic Abuse Partnership
CSP	Community Safety Partnership
DAT	Drug Action Team
DV	Domestic Violence
KSI	Killed or Seriously Injured
LAA	Local Area Agreement
LI	Local Indicator
NI	National Indicator
NPT	Neighbourhood Policing Team
PCT	Primary Care Trust
POP	Preventing Offending Panel
PPO	Prolific & other Priority Offenders

T & C

Tasking & Coordination

YOS

Youth Offending Service

DRAFT